

SANY[®]

SPECIFICATION



25t



33.5m



41.5m

STC250T4

SANY TRUCK CRANE

QUALITY CHANGES THE WORLD

crane.sanyglobal.com

V1.0

It is one of the core business units in SANY Group, specializing in the development and manufacturing of high-end wheel cranes, crawler cranes and tower cranes, including the complete range of wheel cranes from 8 to 2400t, crawler cranes from 25 to 4500t and tower cranes from 6 to 185t.

三一集团旗下核心事业部，从事高端轮式起重机、履带起重机、塔式起重机系列产品的研发制造。覆盖8-2400吨全吨位轮式起重机，25-4500吨全吨位履带起重机，6-185吨塔式起重机。



SANY CRANE





Super load capacity 优越起重性能

U-shape large cross section boom 33m in full length, fixed jib 8m, leading in industry.
Max. lifting moment of basic boom 838kN·m, max. lifting moment of full extension boom 298kN·m.
Lateral span of outriggers 6.2m.

大截面 U 型主臂, 全伸臂长 33m, 副臂长 8m, 行业领先。
基本臂最大起重力矩 838kN·m, 全伸臂最大起重力矩 298kN·m。
横向支腿跨距 6.2m。



Strong bearing chassis 高承载能力底盘

N3 Class chassis with front protection; ground clearance 240mm, better than competitor products.
Equipped with 300L large volume fuel reservoir, the endurance mileage is 30% greater than competitor products.

N3类带前防护底盘; 离地间隙240mm, 优于竞品。
配置300L大容积燃油箱, 续航能力优于竞品30%。



Strong bearing chassis 高承载能力底盘

Brand new 2.5m wide chassis, lower positioned front outrigger in H-layout plus high-strength rectangular cross-section frame, improve torsion and bending resistance and working convenience.

WEICHAI high torque engine, 8-speed FAST gearbox with emergency steering, HANDE heavy-duty axle, the maximum gradient of 42%, fuel consumption 32L per 100km, 2t counterweight.

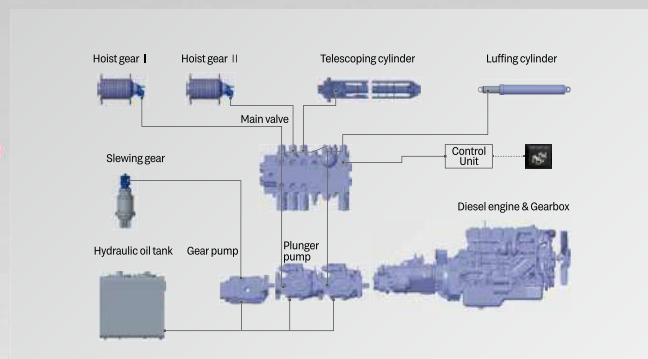
The front axle is equipped with new large-size disc brake, which can increase the braking torque by 11%, reduce heat and make it more reliable.

全新 2.5m 宽底盘, 低前置 H 型活动支腿 + 高强度矩形截面车架, 提升吊载抗扭抗弯能力和作业便利性。

潍柴大扭矩发动机、法士特 8 档带应急转向变速箱、汉德重承载车桥, 最大爬坡度 42%, 百公里油耗 32L, 2t 配重。

前桥配置全新大尺寸盘式制动器, 制动力矩加大 11%, 发热少, 更可靠。





T-series shared double pump intelligent flow distribution system

双泵智能流量分配系统

Domestic well-known brand oil pump motor, the min. winch single rope speed is less than 1.5m/min, the min. stable slewing speed is less than 0.15 °/s, easy to realize mm-level high precision operation.

New shared double pump intelligent flow distribution system, independent luffing, confluence telescoping, combined motion stability increased by more than 50%.

The electric control system can save 15% energy and improve the efficiency of heavy load operation by 30%.

国内顶级品牌油泵马达, 卷扬单绳最低速度小于 1.5m/min, 回转最低稳定小于 0.15°/s, 轻松实现毫米级吊装。

全新开发双泵智能流量分配系统, 变幅独立, 伸臂合流, 复合动作平稳性提升 50% 以上。

电控系统相比液控系统, 上车吊载综合节能 15%, 重载作业效率提升 30%。

SANY TRUCK CRANE STC250T4 / 25T LIFTING CAPACITY





i-Cab - Driver's Cab

新两室 - 下车

Multi-function seat with air suspension, making driving more comfortable.
Double seats and foldable berth for the co-driver.
7-inch liquid crystal screen integrated with back-up image and multi-media.
Electric rearview mirror with electric heating, ensuring good field of view in foul weather.
Adjustable high-brightness LED headlamps/fog lamps, providing clear vision at night.
Reversing sensor with accurate distance detection capability, fully covering the parking area without blind spots, and effectively avoiding scratch and collision.
Full-automatic HVAC, able to automatically adjust indoor temperature as demanded.

主驾驶位配备气浮多功能座椅, 驾驶更舒适。
副驾驶位设置双座椅可折叠式卧铺。
7 寸液晶触摸大显示屏, 集成倒车影像、语音娱乐功能。
电动、电加热后视镜, 不惧怕恶劣冰雪天气。
高亮度可调节 LED 大灯 / 雾灯, 提供夜间清晰视野。
倒车雷达, 探头后方无死角, 精准探距, 防碰撞。
全自动冷暖空调, 自动根据需求调整室内温度。





i-Cab - Operator's Cab

新两室 - 上车

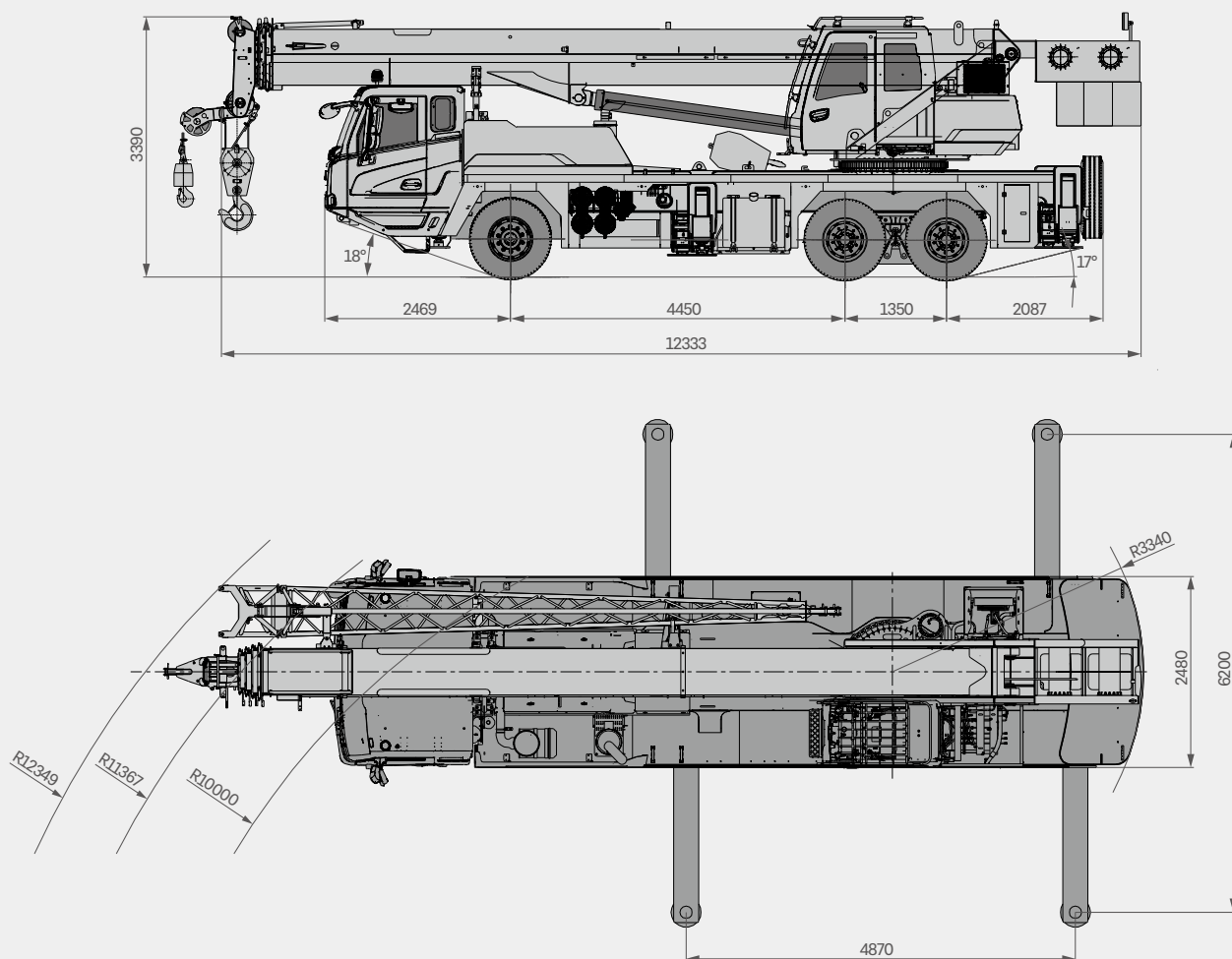
Seat widened by 450mm, and leg room increased by 30%.
Cab tiltable by 0-20°, relieving cervical fatigue during large-angle and long-boom operations.
Adjustable seat with maximum inclination of 140°, allowing the operator to lie flat and rest after work.
Electric seat linked with armrest box, enabling multi-dimensional adjustment for enhanced comfort.
Electronic control joysticks, making operation easier.
45° tilted silicone button panel, easy to reach and operate.
70° openable front window convenient for ventilation and escape; in compliance with CE standards.
Full-automatic HVAC, able to automatically adjust indoor temperature as demanded.

座椅加宽至 450mm,腿部活动空间较上一代增加 30%。
操纵室可实现 0-20° 上仰变位,在大角度、长臂段作业时减缓颈椎疲劳。
可调式座椅,最大后仰 140°,让操作手可以平躺休息。
电动座椅 + 扶手箱联动,多维度调节,更加舒适。
电控操纵手柄,操作毫不费力。
45° 斜置硅胶按键面板,触手可及,方便操控。
70° 可开启式前窗,方便通风及逃生,操作室满足 CE 要求。
全自动冷暖空调,自动根据需求调整室内温度。



Overall Dimensions

整机尺寸



Technical Specification

整机参数

| CATEGORY 类型 | ITEM 项目 | | UNIT 单位 | VALUE 参数 |
|--|---------------------------------------|---|------------|---|
| CAPACITY 额定起重量 | Max. lifting capacity 最大起重量 | | t | 25 |
| WEIGHT 重量 | Gross weight 整机总质量 | | kg | 24600 |
| POWER (CHASSIS) 发动机参数（ 下车 ） | Engine model 发动机型号（ 排放标准 ） | | - | WEICHAI WP7.300E31 (Euro III) 潍柴 WP7.300E31 (欧 III) |
| | Max. engine power 发动机最大功率 | | kW/rpm | 220/2100 |
| | Max. engine torque 发动机最大输出扭矩 | | N·m/rpm | 1250/ (1200~1600) |
| DIMENSIONS 尺寸参数 | Overall length 整机全长 | | mm | 12333 |
| | Overall width 整机全宽 | | mm | 2480 |
| | Overall height 整机全高 | | mm | 3390 |
| TRAVEL 行驶参数 | Max. travel speed 最高行驶速度 | | km/h | 85 |
| | Steering radius 转弯半径 | Min. steering radius 最小转弯半径 | m | 10 |
| | | Min.steering radius of boom tip 臂头最小转弯半径 | m | 12.35 |
| | Wheel formula 车轮模式 | | - | 6 × 4 × 4 |
| | Min. ground clearance 最小离地间隙 | | mm | 240 |
| | Approach angle 接近角 | | ° | 18 |
| | Departure angle 离去角 | | ° | 17 |
| | Max. gradeability 最大爬坡度 | | - | 42% |
| | Fuel consumption per 100km 每 100 公里油耗 | | L | 32 |
| | MAIN PERFORMANCE 主要性能参数 | Working temperature range 使用温度区间 | | ℃ |
| Min.rated lifting radius 最小额定幅度 | | m | 3 | |
| Tail slewing radius 转台尾部回转半径 | | m | 3.4 | |
| Boom sections (Qty.) 臂节数 | | - | 4 | |
| Boom shape 臂形状 | | - | U shape U型 | |
| Max.lifting moment 最大起重力矩 | | Basic boom 基本臂 | kN·m | 838 |
| | | Full-extension boom 全伸主臂 | kN·m | 482 |
| | | Full-extension boom + jib 全伸主臂 + 副臂 | kN·m | 298 |
| Boom length 臂长 | | Basic boom 基本臂 | m | 10.26 |
| | | Full-extension boom 全伸主臂 | m | 33 |
| | | Full-extension boom + jib 全伸主臂 + 副臂 | m | 41 |
| Max.lifting height 最大起重高度 | | Basic boom 基本臂 | m | 10.76 |
| | | Full-extension boom 全伸主臂 | m | 33.5 |
| | | Full-extension boom + jib 全伸主臂 + 副臂 | m | 41.5 |
| Outrigger span (Longitudinal × Transverse) 支腿跨距（ 纵 × 横 ） | | m | 4.87 × 6.2 | |
| Jib offset 副臂安装角度 | | ° | 0°、15°、30° | |
| AIRCONDITIONER 空调 | In operator's cab 上车空调 | | - | Cooling 制冷 |
| | In driver's cab 下车空调 | | - | Heating & Cooling 制冷、制热 |

Technical Specification

整机参数



Axle Load 轴荷

| Axle 轴 | 1 | 2 | 3 | Gross weight 总重量 |
|-----------------|------|------|------|------------------|
| Axle load 轴荷 /t | 7.34 | 8.63 | 8.63 | 24.60 |
| Remark 备注 | - | | | |



Hook 吊钩

| Rated load 额载 /t | Number of sheaves 滑轮数量 | Rope rate 倍率 | Hook weight/kg 吊钩重量 |
|-----------------------|------------------------|--------------|---------------------|
| 25 (Main hook 主钩) | 4 | 8 | 250 |
| 3 (Auxiliary hook 副钩) | 0 | 1 | 50 |



Operations 主要动作参数

| Item 项目 | | Max.single rope lifting speed (empty load) 单绳速度 (空载) | Rope diameter/length 钢丝绳直径 / 长度 | Max. single line pull 最大单绳拉力 |
|--|--------------|--|------------------------------------|---------------------------------|
| Main winch 主卷扬 | | 130m/min | Φ 14mm/163m | 3.5t |
| Auxiliary winch 副卷扬 | | 130m/min | Φ 14mm/95m | 3.5t |
| Slewing speed 回转速度 | | 2.5r/min | | |
| Full luffing up/down time of boom 主臂起落幅时间 | | 45s/50s | | |
| Full extension/retraction time of boom 主臂伸缩时间 | | 80s/90s | | |
| Outrigger jack 垂直支腿 | Extension 伸 | 16s | | |
| | Retraction 缩 | 15s | | |
| Outrigger beam 水平支腿 | Extension 伸 | 16s | | |
| | Retraction 缩 | 15s | | |

Crane Introduction

整机介绍

Carrier 下车

Driver's cab 驾驶室

- Multi-function seat with air suspension, making driving more comfortable.
- Double seats and foldable berth for the co-driver.
- 7-inch liquid crystal screen integrated with back-up image and multi-media.
- Electric rearview mirror with electric heating, ensuring good field of view in foul weather.
- Adjustable high-brightness LED headlamps/fog lamps, providing clear vision at night.
- Reversing sensor with accurate distance detection capability, fully covering the parking area without blind spots, and effectively avoiding scratch and collision.
- Full-automatic HVAC, able to automatically adjust indoor temperature as demanded.
- 主驾驶位配备气浮多功能座椅, 驾驶更舒适。
- 副驾驶位设置双座椅可折叠式卧铺。
- 液晶触摸大显示屏, 集成倒车影像、语音娱乐功能。
- 电动、电加热后视镜, 不惧恶劣冰雪天气。
- 高亮度可调节 LED 大灯 / 雾灯, 提供夜间清晰视野。
- 倒车雷达, 探头后方无死角, 精准探距, 防碰撞。
- 全自动冷暖空调, 自动根据需求调整室内温度。

Carrier frame 车架

- The box-type structure welded by high-strength steel with strong bearing capacity.
- 车架为高强度钢板焊接而成的箱形结构, 承载能力强。

Chassis engine 底盘发动机

- Model: WEICHAI WP7.300E31 Inline six-cylinder diesel engine with watercooler and inter cooler.
- Emission standard: EURO III.
- Fuel reservoir capacity: 200L.
- 型式: 潍柴 WP7.300E31 (欧 III), 直列六缸、水冷却、增压中冷、柴油发动机。
- 排放标准: Euro III。
- 燃料箱有效容积: 300L。

Transmission 变速箱

- 8-speed manual transmission with synchronizer, large speed ratio range, adaptable to slope climbing and high-speed traveling.
- 手动带同步器变速箱, 8 挡, 速比范围大, 既可满足低速场地爬坡行驶, 又可满足高速行驶。

Transmission shaft 传动轴

- Optimized layout, higher torque output via contrate gear connecting transmission shaft cardan.
- 优化的传动轴布置, 传动轴传动平稳、可靠。最优力传递, 采用端面齿联结传动轴, 传递扭矩大。

Suspension system 悬挂系统

- The suspension of axle 1 is realized by leaf spring, and axles 2 & 3 rubber. The system's strength is verified by 100,000 cycling fatigue tests, hence ride comfort is out of question.
- 一二桥采用钢板弹簧悬挂系统, 三四桥采用橡胶悬挂系统, 悬挂系统经过超过 10 万次的疲劳试验, 保证强度的同时兼顾乘坐的舒适性。

Steering 转向系统

- Equipped with cycle ball power steering device and double circuit system hydraulic steering device.
- 1 & 2 axle using hydraulic power steering control.
- Steering mode: Highway driving mode.
- The double circuit hydraulic power steering system with mechanical steering limit is adopted.
- Mechanical steering with hydraulic power system of linkage feedback.
- 配置循环球动力转向器, 双回路系统液压转向装置。
- 1、2 桥采用液压助力机械转向控制。
- 转向模式: 公路行驶模式。
- 采用带机械转向限位的双回路液压助力式转向系统。
- 机械式转向机构, 采用杆系反馈的液压助力转向系统。

Tires 轮胎

- Eleven tires sized 12R22.5, strong bearing capacity and durability.
- 11 (轮胎数) 一轮胎规格: 12R22.5, 承载能力强, 耐用。

Wheel formula 车轮模式

- 6 × 4 × 4.

Outrigger 支腿

- H-type layout, four point support, easy to operate, outrigger beam hydraulically telescoping.
- H 型支腿 4 点支撑, 易操作、稳定性强; 采用细晶粒高强度钢板材料, 活动支腿全液压横向伸缩。

Brake 制动系统

- Air servo functions on all wheels with diagonally split system.
- The braking system includes service brake & parking brake & emergency brake & assisting brake.
- Service brake: air servo, dual circuit; front axle adopts disc brake, delivering stronger braking performance.
- Parking brake: functioning at axles 2 and 3 by spring-loaded air chamber.
- Emergency brake: performed by accumulator releasing pressure.
- Assisting brake: engine exhaust brake, safety assured when driving down long slopes.
- 所有车轮均用空气伺服制动器, 双回路制动系统, 发动机带排气制动。
- 制动系统包括行车制动、驻车制动、应急制动和辅助制动。
- 行车制动采用双回路制动系统, 所有车轮均用空气伺服制动器。
- 驻车制动是通过气室内弹簧作用在第三、四桥上。
- 应急制动阀由驻车制动兼做应急制动。
- 辅助制动为排气制动, 保证在下长坡时的制动安全, 保证行车的安全可靠。

Electrical system 电气系统

- 2*12V maintenance-free battery with a mechanical power switch, the overall power can be cut off manually. CAN instrument, data integration between superstructure and chassis.
- 2 × 12V 免维护蓄电池, 配有机械式电源总开关, 可手动切断整车电源; 总线控制系统, 可实现上下车信息交互。

Crane Introduction

整机介绍



Operator's cab 操纵室

- Seat widened by 450mm, and leg room increased by 30%. Optional cab tiltable by 0-20°, relieving cervical fatigue during large-angle and long-boom operations.
- Adjustable seat with maximum inclination of 140°, allowing the operator to lie flat and rest after work.
- Electric seat linked with armrest box, enabling multidimensional adjustment for enhanced comfort.
- Electronic control joysticks, making operation easier. 45° tilted silicone button panel, easy to reach and operate.
- 70° openable front window convenient for ventilation and escape; in compliance with CE standards.
- Full-automatic HVAC, able to automatically adjust indoor temperature as demanded.
- 座椅加宽至 450mm, 腿部活动空间较上一代增加 30%。
- 可调式座椅, 最大后仰 140°, 让操作手可以平躺休息。
- 电动座椅+扶手箱联动, 多维度调节, 更加舒适。
- 电控操纵手柄, 操作毫不费力。
- 45°斜置硅胶按键面板, 触手可及, 方便操控。
- 70°可开启式前窗, 方便通风及逃生、操作室满足 CE 要求。
- 全自动单冷空调, 自动根据需求调整室内温度。



Boom & Telescoping System 伸缩系统

- The boom structure adopts anti-distortion design and high strength steel plate. Four U-shape sections with rope arranger by single cylinder. Basic boom 10.26m, jib 8m, full-extension boom 33.5m, max. lifting height 41.5m.
- 臂结构采用抗扭曲设计, 采用高强度钢板制作, 四节臂, 单板臂头, 基本臂 10.26m, 全伸臂 33m, 副臂 8m, 主臂全伸起升高度 33.5m, 带副臂最大起升高度 41.5m。U 形截面, 单缸绳排伸缩方式。



Hoist 起升机构

- Smooth hoisting powered by high quality fixed displacement piston motor.
- Normally closed winch brake and winch balance valve are fitted to prevent hook from falling and stalling.
- Standard 20t main hook, wire rope diameter 14mm, length 1635m.
- Standard 3t aux. hook, wire rope diameter 14mm, length 95m.
- 卷扬采用高品质定量柱塞马达, 重物起落平稳。
- 常闭式卷扬制动器, 并设置卷扬平衡阀, 可防止落钩失速。
- 标配 20t 主钩, 直径 $\phi 14\text{mm}$, 长 163m 主卷扬钢丝绳。
- 标配 3t 副钩, 直径 $\phi 14\text{mm}$, 长 95m 副卷扬钢丝绳。



Hydraulics 液压系统

- High quality oil pump, motor, valve and other key hydraulic components, to ensure the stability and reliability of the hydraulic system.
- Luffing system adopts open system, different actions using different pressure levels to achieve energy saving, safe control of luffing and expansion action.
- Equipped with load sensitive system, the main pump adopts double piston pump, energy saving and high efficiency.
- 采用高品质的油泵、马达、阀等关键液压元件, 保证液压系统稳定、可靠。
- 变幅伸缩系统采用开式系统, 不同动作采用不同的压力等级, 从而实现节能、安全的控制变幅和伸缩动作; 变幅机构采用加压落幅, 落幅稳定快捷。
- 采用负载敏感系统, 主泵采用双联柱塞变量泵, 节能高效。



Luffing system 变幅系统

- Active luffing down, the luffing speed is uniform and controllable. Luffing angle: -2.5°~80°.
- 加压落幅, 落幅稳定快捷; 变幅角度: -2.5°~80°。



Slewing 回转系统

- 360° slewing and max. slewing speed 2.5r/min, hydraulic proportional speed regulation makes the braking more stable.
- 360° 回转, 最大回转速度 2.5 r/min, 动作稳定, 系统可靠, 制动平稳。



Counterweight 配重

- Fixed counterweight 2t, no movable unit.
- 固定配重 2t, 无活动配重。



Control system 控制系统

- Data display system: multiple sensors realizing timely feedback of information, real-time monitoring, to ensure that working status well managed.
- Man-machine interaction interface: user-friendly design for comprehensive and clear information. The control pattern can be adjusted to customer's prefer.
- Bus instrument: integrated electrical bus instrument can control the driving parameters at any time. Engine fault prompting enables convenient and quick maintenance.
- 整车数据显示系统: 配置丰富的传感器件, 及时反馈数据信息, 实现实时监控, 确保随时掌控整车工作状态。
- 人机交互界面: 人机交互界面设计人性化, 信息丰富而清晰, 客户可根据个人操作习惯和不同使用条件自行设置整车操控性, 充分满足客户的个性化需求。
- 总线仪表: 采用集成一体智能控制电气系统的总线仪表, 可随时掌控行驾参数, 驾乘轻松; 同时, 拥有发动机故障提示功能, 维修排故方便、快捷。
- 力矩限制器: 采用高度智能力矩限制器系统, 全方位保护吊载作业。



Safety equipment 安全装置

- Load moment indicator: A method of analytical mechanics is adopted and a moment limiter calculation system based on the hoisting mechanics model is established. Through online empty-load calibration, the rated hoisting accuracy can reach $\pm 3\%$ to fully protect the hoisting operation.
- The hydraulic system is equipped with hydraulic balance valve, overflow valve, two-way holding valve, etc. to realize stability and reliability.
- Boom head is equipped with A2B limit switch to prevent the wire rope from over winding.
- The length sensor and pressure sensor are equipped to display the operating status of the crane in real time, automatically cut off dangerous actions, and give a buzzer alarm.
- 力矩限制器: 采用分析力学方法, 建立了基于吊重力学模型的力矩限制器计算系统, 通过在线空载标定, 额定吊重精度达到 $\pm 3\%$, 全方位保护吊载作业; 超载作业时, 系统自动报警提示, 为操纵作业提供安全保障。
- 液压系统配置液压平衡阀、溢流阀、双向液锁等元件, 实现液压系统稳定可靠。
- 主臂臂端配置高度限位器, 防止钢丝绳过卷。
- 配置长度角度传感器、压力传感器, 实时显示起重机作业状态, 自动切断危险动作, 蜂鸣报警。

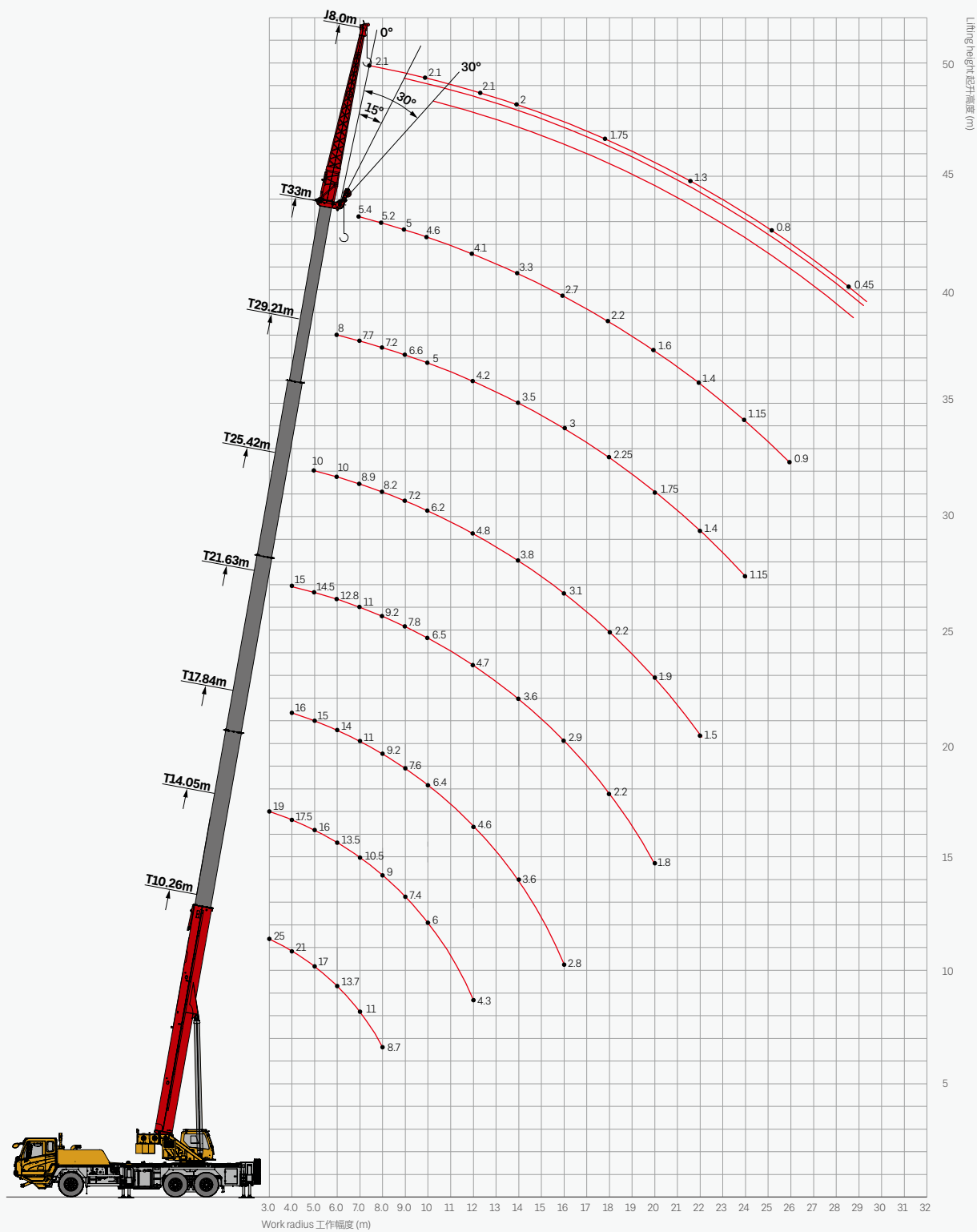


Optional equipment at extra fees 选配

- Anemometer
- Special painting
- Other equipment available upon request
- 风速仪
- 特殊涂装
- 其他选配视需求定

Operating Range

起升高度曲线









Load Chart - Telescopic Boom

性能表 - 主臂

Unit: t



|  | 10.26 | 14.05 | 17.84 | 21.63 | 25.42 | 29.21 | 33 |  |
|---|-------|-------|-------|-------|-------|-------|------|---|
| 3 | 25000 | 19000 | | | | | | 3 |
| 3.5 | 23000 | 18000 | 16000 | | | | | 3.5 |
| 4 | 21000 | 17500 | 16000 | 15000 | | | | 4 |
| 4.5 | 19000 | 17000 | 15500 | 15000 | 10000 | | | 4.5 |
| 5 | 17000 | 16000 | 15000 | 14500 | 10000 | | | 5 |
| 5.5 | 15000 | 15000 | 14500 | 13600 | 10200 | 8000 | | 5.5 |
| 6 | 13700 | 13500 | 14000 | 12800 | 10000 | 8000 | | 6 |
| 6.5 | 12500 | 12000 | 12500 | 12000 | 9500 | 7900 | 5600 | 6.5 |
| 7 | 11000 | 10500 | 11000 | 11000 | 8900 | 7700 | 5400 | 7 |
| 8 | 8700 | 9000 | 9200 | 9200 | 8200 | 7200 | 5200 | 8 |
| 9 | | 7400 | 7600 | 7800 | 7200 | 6600 | 5000 | 9 |
| 10 | | 6000 | 6400 | 6500 | 6200 | 5000 | 4600 | 10 |
| 12 | | 4300 | 4600 | 4700 | 4800 | 4200 | 4100 | 12 |
| 14 | | | 3600 | 3600 | 3800 | 3500 | 3300 | 14 |
| 16 | | | 2800 | 2900 | 3100 | 3000 | 2700 | 16 |
| 18 | | | | 2200 | 2200 | 2250 | 2200 | 18 |
| 20 | | | | 1800 | 1900 | 1750 | 1600 | 20 |
| 22 | | | | | 1500 | 1400 | 1400 | 22 |
| 24 | | | | | | 1150 | 1150 | 24 |
| 26 | | | | | | | 900 | 26 |
| 28 | | | | | | | | 28 |
| 30 | | | | | | | | 30 |
|  | 8 | 6 | 6 | 5 | 4 | 3 | 3 |  |
|  | 0% | 16.6% | 33.2% | 49.9% | 66.5% | 83.1% | 100% |  |

Remark


- Value listed are the max. capacity when the crane is in a level condition on solid ground or surface.
- Radius refers to actual radius with boom deflection considered.
- The stability determined load rating values in the load chart are determined in accordance with ISO4305.
- Value above are calculated with hooks and lifting slings considered (250kg main hook block, 50kg aux. hook block).
- When the fifth outrigger is landed in position, value listed are applicable for 360 degree operation.
- Rated lifting performance on boom point sheave equals 2100kg; boom load capacity shall be 450kg less than value given when jib unfolds.
- Load value is given according to the larger radius or boom length value when the actual radius or boom length falls between two numbers above.

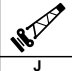
- 起重性能表中给定数值是在平整坚固的地面上，整机调平状态下起重机的额定起重量。
- 起重性能表中工作幅度是指吊载后的实际幅度。
- 起重性能表中的稳定性决定的额定载荷数值的确定遵循 ISO4305。
- 起重性能表中额定起重量包括起重钩（主起重钩重 250kg，副起重钩重 50kg）和吊具的重量。
- 打开好第五支腿时，表中数值适用于全方位（360°）作业。
- 使用臂尖滑轮时额定起重量不超过 2100kg。若副起重臂处于展开状态，主臂起吊的额定起重量应减少 450kg。
- 如果实际臂长和幅度介于两个数值之间时，取较长的臂长及较大的幅度所决定的额定起重量进行起吊作业。

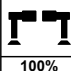
Load Chart - Fixed Jib

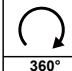
性能表 - 副臂


Unit: t


T





J

100%

360°

2t

EN

|  | 33+8 | | |  |
|---|------|------|------|---|
|  | 0° | 15° | 30° |  |
| 78 | 2.1 | 1.85 | 1.45 | 78 |
| 75 | 2.1 | 1.75 | 1.35 | 75 |
| 72 | 2.1 | 1.6 | 1.3 | 72 |
| 70 | 2 | 1.5 | 1.25 | 70 |
| 65 | 1.75 | 1.35 | 1.1 | 65 |
| 60 | 1.3 | 1.15 | 1 | 60 |
| 55 | 0.8 | 0.7 | 0.55 | 55 |
| 50 | 0.45 | 0.35 | 0.3 | 50 |

- Remark
1. Value listed are the max. capacity when the crane is in a level condition on solid ground or surface.

2. Radius refers to actual radius with boom deflection considered.

3. Value above are calculated with hooks and lifting slings considered (250kg main hook block, 50kg aux. hook block).

4. When the fifth outrigger is landed in position, value listed are applicable for 360 degree operation.

5. Rated lifting performance on boom point sheave equals 2100kg; boom load capacity shall be 300kg less than value given when jib unfolds.

6. Load value is given according to the larger radius or boom length value when the actual radius or boom length falls between two numbers above.
- 1、起重性能表中给定数值是在平整坚固的地面上，整机调平状态下起重机的额定起重量。

2、起重性能表中工作幅度是指吊载后的实际幅度。

3、起重性能表中额定起重量包括起重钩（主起重钩重 250kg，副起重钩重 50kg）和吊具的重量。

4、打开好第五支腿时，表中数值适用于全方位（360°）作业。

5、使用臂尖滑轮时额定起重量不超过 2100kg。若副起重臂处于展开状态，主臂起吊的额定起重量应减少 300kg。

6、如果实际臂长和幅度介于两个数值之间时，取较长的臂长及较大的幅度所决定的额定起重量进行起吊作业。



SANY GROUP CRANE BU

SANY Mobile Crane Industrial Park, No.168 Jinzhou Avenue, Jinzhou Development Zone, Changsha City, Hunan Province, P.R. China Zip 410600

Consulting sanycrane@sanygroup.com (Crane BU) / crd@sany.com.cn (IHQ)

After-sales Service 0086-400 6098 318

Reminder:

Any change in the technical parameters and configuration due to product modification or upgrade may occur without prior notice.

The machine in the picture may include additional equipment. This brochure is for reference only, and goods in kind shall prevail.

Copyright at SANY. No part of this brochure may be copied or used for any purpose without written approval from SANY.

© Edited in November 2022

三一集团起重事业部

中国湖南长沙金洲开发区金洲大道 168 号 三一汽车起重机产业园 邮编: 410600

咨询: sanycrane@sanygroup.com (起重事业部) / crd@sany.com.cn (国际总部)

海外售后服务: 0086-400 6098 318

温馨提示:

由于技术不断更新, 技术参数及配置如有更改, 恕不另行通知。图中机器可能包括附加设备, 本画册仅供参考, 以实物为准。

版权为三一所有, 未经三一书面许可, 本画册任何内容不得被复制用于任何目的。

© 2022 年 11 月版

SANY CRANE



crane.sanyglobal.com

