

**SPK 10000**

**PALFINGER**

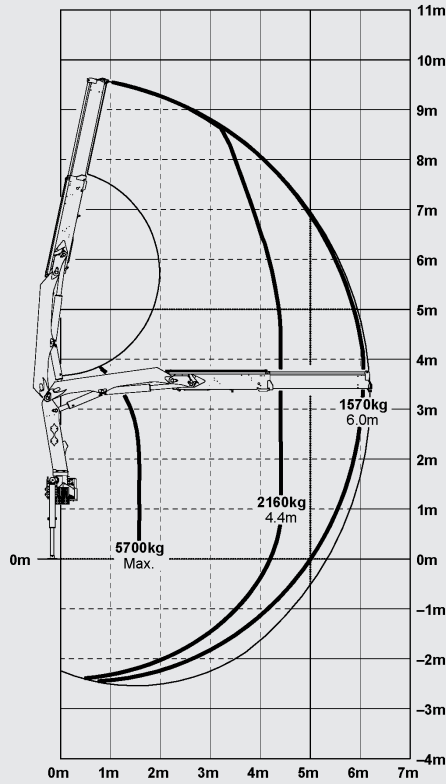
LIFETIME EXCELLENCE

**PALFINGER ASIA PACIFIC  
KNUCKLE BOOM CRANES**

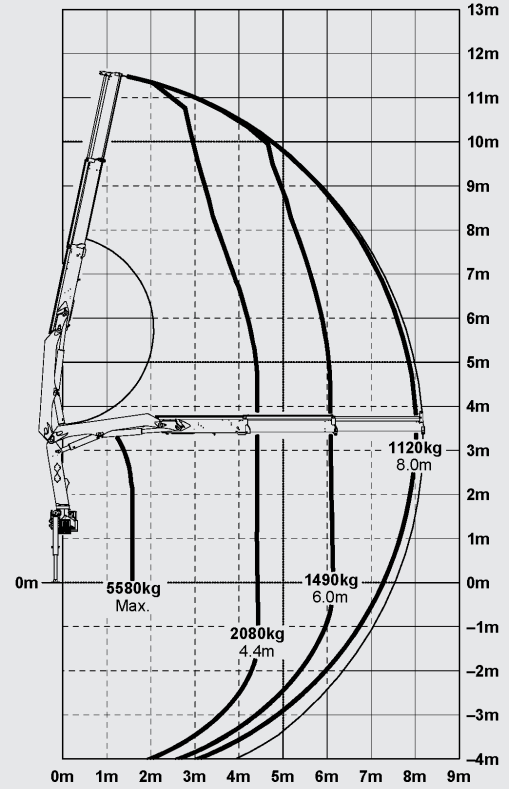


# SPK 10000

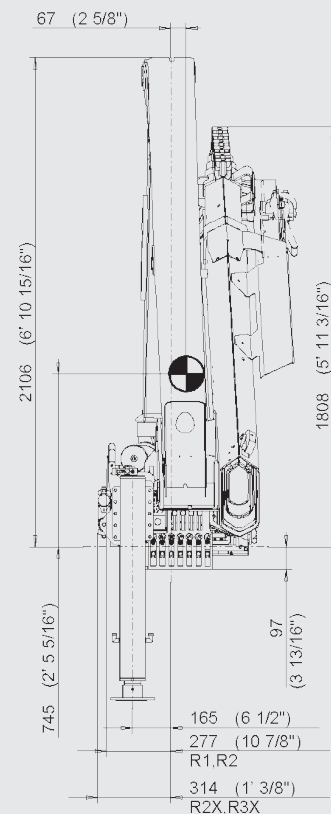
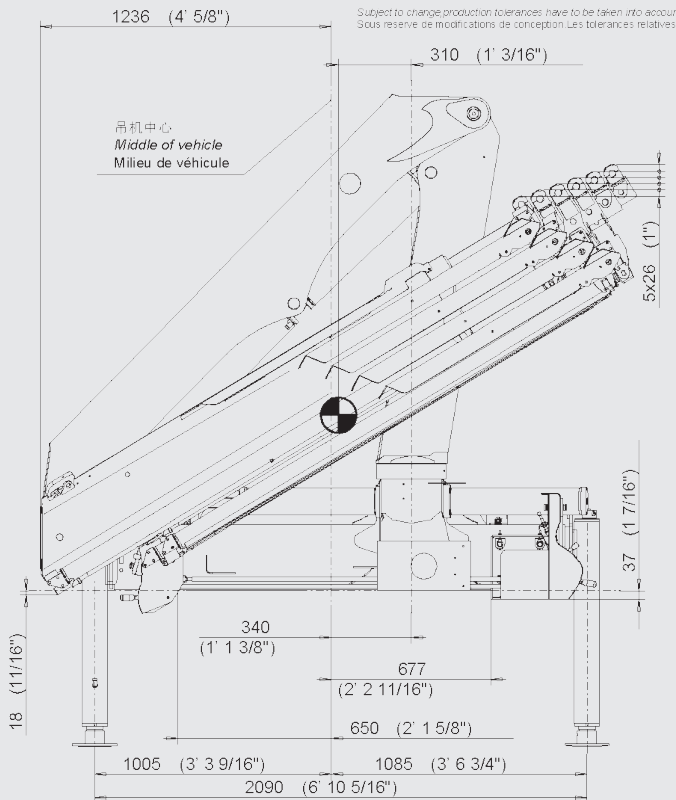
## SPK 10000



## SPK 10000 A

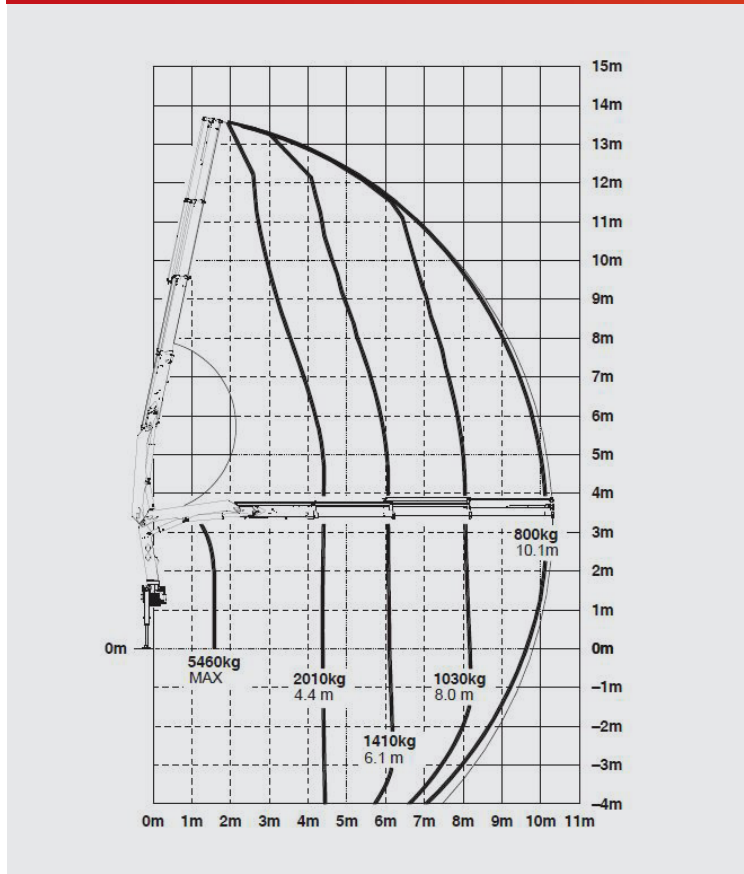


## DIMENSIONS

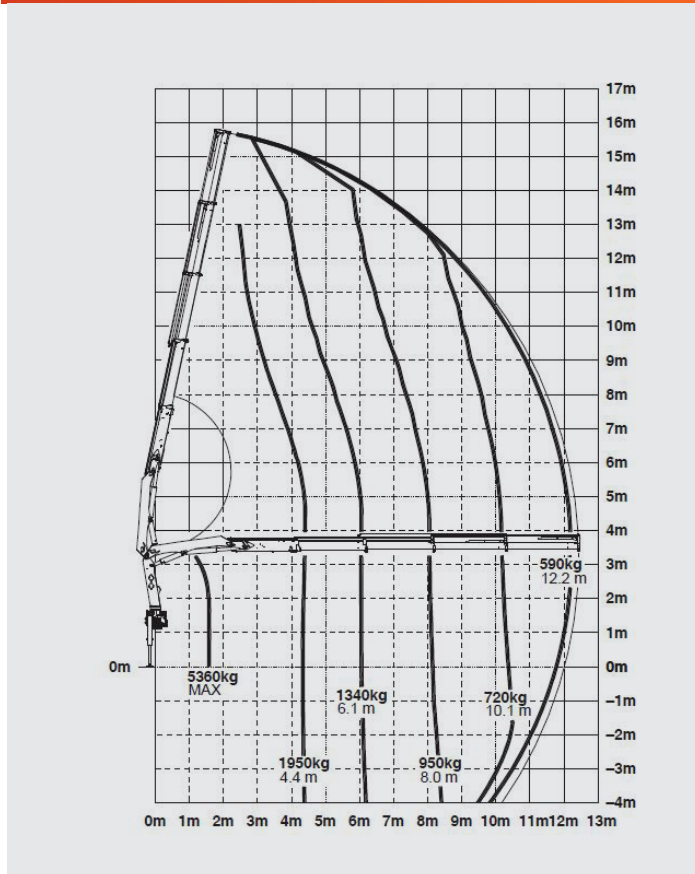


\*All dimensions are in mm\*

## SPK 1000 B



## SPK 1000 C



## FEATURES

- Equipped with load holding valves for safe crane operations
- High speed boom extension and retraction with Return Oil Utilization
- Optimized lifting performance with the use of high tensile steel and hexagonal boom design
- Lightweight yet robust construction according to European standards (EN 12999)
- Optional Overload Protection System and Emergency Stop Button
- Professional installation solutions with the use of Palsoft programme
- Suitable for installation on 2-axes trucks
- High Density (HD) Paint system provides better resale value retention and attractive aesthetics.

## TECHNICAL SPECIFICATIONS (EN 12999 H1-B3)

Max. Lifting Moment	mt	9.5
Max. Lifting Capacity	kg	5700
Max. Hydraulic Outreach	m	6.2 (Std.) / 8.2 (A) / 10.3 (B) / 12.4 (C)
Slewing Angle	°	400
Slewing Torque	mt	1.2
Stabilizer Spread	mm	4870 (R2 / R2X)
Fitting Space Required (std.)	mm	657
Width Folded	mm	2500
Operating Pressure	bar	315
Recommended Pump Capacity	l/min	30 - 45
Dead Weight (std.)	kg	1071



# LIFETIME EXCELLENCE

**PALFINGER LOADER CRANES ARE CONVINCING DUE TO THEIR SUPERIOR LIFE-CYCLE PERFORMANCE. THEY ARE THE MOST ECONOMICAL AND ALSO THE MOST RELIABLE OVER THE ENTIRE PRODUCT LIFE. FROM SOLUTION FINDING TO RE-SALE.**



For further information please visit: [www.palfinger.com/thebrand](http://www.palfinger.com/thebrand)

## PALFINGER ASIA PACIFIC PTE LTD

3 INTERNATIONAL BUSINESS PARK | NORDIC EUROPEAN CENTRE  
# 05-25/26 | 609927 | SINGAPORE  
T +65 6591 9191 | F +65 6591 7737  
Enquiries: [asia@palfinger.com](mailto:asia@palfinger.com)  
Website: [www.palfinger.com](http://www.palfinger.com)

