



# SRC800C

SANY Rough-Terrain Crane  
80 Tons Lifting Capacity

Quality Changes the World



## Excellent and stable chassis

- ISDe285 30 engine, with multi-mode power output function, has the decreased additional power consumption and improved energy efficiency.
- Real-time 4x4 drive; maximum speed: 35km/h, maximum climbing degree: 75%; excellent power.
- 4 steering modes; minimum turning diameter: 7.5m, minimum ground clearance: 500mm; excellent performance.

## Super long, strong and sensitive lifting performance

- Length of fully-extended boom: 47m; truss + box-type extended jib: 17.5m; leading the industry.
- Five-section U-shaped boom and double-cylinder rope-arranging telescopic mechanism are stable and efficient.
- Mounting angle of jib is able to achieve the conversion of 0°, 15° and 30°, enhancing the far-away lifting efficiency.

47

Full-extend boom 47m

75

Max. gradeability 75%

2820

Maximum lifting torque: 2820kN.m



## Efficient, stable, energy-saving and adjustable hydraulic system

- Load feedback, constant-power control piston pump and electric proportional control multi-valve system ensure the control precision and energy efficiency.
- The dual-pump converging/dividing technology achieves the composite brake cylinder, ensuring the smooth operation and efficient inching.

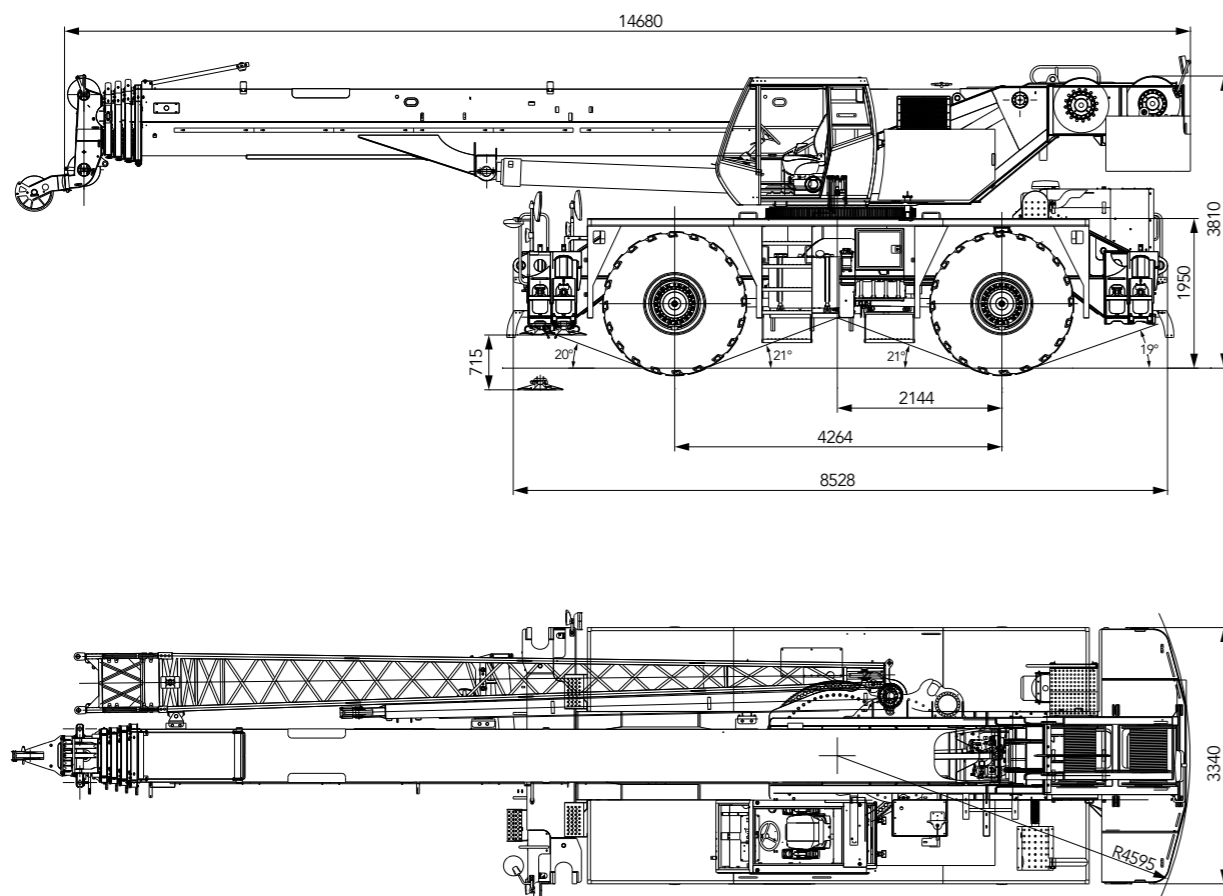
## Stable, advanced and smart electronic control system

- Self-developed SYMC controller and CAN bus technology keep the signal stable; the all-round smart protection torque limiter is arranged, with the accuracy from 0 to 10%; comprehensive logic and interlock control ensures the safe and reliable operation.

## Humanized design

- Control room may face up for 0° ~ 20° to ease the fatigue during the high-altitude lifting operation;
- Hard and spacious ladder, and barrier-free countertop.

## Overall Dimensions



## Technical Parameters

Type	Item	Unit	Parameter	
Dimensions	Overall length	mm	14680	
	Overall width	mm	3340	
	Overall height	mm	3810	
Weight	Overall weight	kg	55000	
	Load	Front axle load	kg	27200
		Rear axle load	kg	27800
Engine	Model	Dongfeng Cummins ISDe285 30 (Euro III)		
	Max. power of engine	Kw/rpm	210/2500	
	Max. output torque of engine	N.m/rpm	970/1400	
Traveling	Max. traveling speed	Km/h	35	
	Min. turning radius	m	12.5 / 7.5	
	Approach angle	°	≥20	
	Departure angle	°	≥19	
	Max. gradeability	%	75	
	Fuel consumption per 100km	l	≤100	
	Main performance specifications	Max. rated total lifting capacity	t	80
Tail slewing radius of turntable		m	4.595	
Max. lifting torque		Base boom	kN.m	2820
		Full-extended boom	kN.m	
Outrigger span(Longitudinal/Transversal)		m	7.4×7.52	
Boom length		Base boom	m	12.2
		Full-extended boom	m	47
	Full-extended boom + jib	m	64.5	
Working speed	Max. single rope lifting speed of main winch (no load)	m/min	150	
	Max. single rope lifting speed of auxiliary winch (no load)	m/min	150	
	Full extension and retraction time of boom	s	120/130	
	Full elevation up and down duration of boom	s	80/80	
	Slewing speed	r/min	0~2.0	

## Technical Parameters



### Axle Load

Shaft	Front axle	Rear axle	Total weight
Axle load/t	27.2	27.8	54
Note	without main and auxiliary hooks		



### Hook and number of parts of line

Rated load/t	Pulleys	Number of parts of line	Hook weight (kg)
80	6	12	815
50	4	8	630
8	-	1	160



### Working speed

Item	Parameter	Wire rope diameter/length	Max. single line tension
Main winch	Single line speed 0~135m/min	20mm/250m	7.2t
Auxiliary hoist gear	Single line speed 0~135m/min	20mm/145m	7.2t
Swing		0~2.0r/min	
Luffing down and up		80s/80s (0~78°)	
Extension and retraction		120s/130s (12.2m~47m)	
Outrigger	Vertical	Retract	40s
		Extend	35s
	Horizontal	Retract	25s
		Extend	30s

## Crane Introduction



### Operator's Cab

- The ergonomic design independently developed by SANY, frame-type steel structural body, sliding door, safety glass, corrosion-resistant steel plate, softened interior trim, large interior space, panoramic sunroof, adjustable seats and other user-friendly designs as well as the air conditioning and electric wiper guarantee the more comfortable and easier operation; the torque limiter display achieves the organic combination of console and display system to monitor all the data of operating conditions. Variable-position operator cab, with the maximum raising angle of 20°, ensures the more comfortable operation for the long section operation.



### Hydraulic system

- High-quality and reliable pump, main valve, motor, balance valve and other key hydraulic elements are adopted to ensure the stable and reliable hydraulic system; the operating performance is improved through the accurate parameter matching.
- Load-sensitive variable displacement piston pump is able to conduct the adaptive control for the pump displacement, the high-precision flow control and the accurate control of action, and greatly reduce the energy consumption.
- With the flow compensation and load feedback functions, electric proportional control main valve is able to achieve the stable and accurate control for the single action and combined actions under a variety of operating conditions.
- Winch is equipped with the electronic variable motor, with the high operating efficiency; the maximum single line speed of main and auxiliary winches is up to 135m/min.
- The slewing buffer valve has the free sliding function which ensures the smooth slewing start and control and excellent inching performance. Capacity of hydraulic oil tank: 990L.



### Control system

- Electronic control operating system is provided with the imported electronic control handle and bus connection, with the good control, high reliability and easy maintenance and diagnosis.
- Bus instruments: the bus instruments of integrated smart control electrical system can monitor the driving parameters at any time and facilitate the driving; engine fault prompt function simplifies the maintenance and troubleshooting.
- For the all-round safety protection system, the main and auxiliary winches are provided with the three-wrap rope protector and height limiter to prevent the overfall and overwind of wire rope, plus the anti-tipping protection and extreme angle protection.
- Torque limiter: the highly-smart torque limiter system is used to provide the all-round protection for the lifting operation to ensure the accurate, stable and smooth operation.
- Fault diagnosis system inspects the electrical, hydraulic actions of superstructure, chassis (for major safety faults), engine, gearbox and other faults to ensure the reliable operation of crane.
- Wireless remote control system is adopted to make the assembly and disassembly of overall crane more convenient, safer and more flexible.



### Telescopic boom

- Five sections; base boom: 12.2m; fully-extended boom: 47m; jib: 17.5m, lifting height of fully-extended boom: 49.3m; maximum lifting height with jib: 64.3m; U-shaped and made of high-strength welding structural steel; double-cylinder rope-arranging extension and retraction method.



### Luffing system

- Double-acting single-piston-rod hydraulic cylinder is equipped with the safety balance valve. Self-weight luffing-down system is more energy efficient and improves the smoothness of operation.
- Luffing angle: -2°~78°.



### Slewing

- 360° rotation, double slewing reducer layout, and maximum slewing speed of 2r/min; electric proportional control speed control ensures the stable action and reliable system. Unique slewing buffer design ensures the smooth start and stop, and the excellent control.



### Counterweight

- Removable counterweight is 9500kg, which is easy to disassemble and facilitates the transport of machine.



### Safety device

- Torque limiter: Based on the analytical mechanics method, the torque limiter calculation system based on the lifting force model is established. Through the on-line no-load calibration, the rated lifting accuracy is up to 0-10%, providing the all-round protection for the lifting operation; in case of the overload operation, the system automatically gives alarm to provide the protection for the control operation.
- Hydraulic system is equipped with the hydraulically balanced valve, overflow valve and two-way hydraulic lock etc., to ensure stable and reliable operation.
- Main and auxiliary winches are equipped with three-wrap rope protector to prevent the overfall of wire rope.
- Boom and jib ends are equipped with height limiters respectively to prevent the overwind of wire rope.

## Crane Introduction

### Hoisting

- Pump and motor are of dual variable speed, with the wide speed regulation range and high energy efficiency.
- Winch balance valve is perfectly combined with the unique anti-slip hook technology to ensure the smooth rising and falling processes of weight.
- Anti-rotation high-strength wire rope is provided to accurately locate the lifting.
- Normally-closed winch brake and winch balance valve prevent the loss of weight during the falling process.
- One optional large hook: 810Kg, one optional main hook: 630Kg, and one optional auxiliary hook: 160Kg.
- Main winch wire rope: diameter of 20mm and length of 250m.
- Auxiliary winch wire rope: diameter of 20mm and length of 145m.

### Frame

- Frame is welded with the high-strength steel plates, with the strong carrying capacity.

### Outrigger

- H-shaped outrigger, 4-point support, vertical/horizontal span of 7.52m×7.4m.
- Fine grain high-strength steel plate, and the vertical cylinder protected with the two-way hydraulic lock.

### Engine

- Type: Inline six-cylinder, water cooling, supercharged and mid-cooling, diesel engine.
- Rated power: 210kw/2500r/min.
- Environmental protection: Emissions as per Stage 3A standard.
- Effective volume of fuel tank: 350L.

### Transmission

- Torque converter/gearbox: automatic transmission, with 6 gears; the large speed ratio range applies to the low-speed climbing and the high-speed driving.
- Drive shaft: the optimized drive shaft layout ensures the smooth and reliable drive operation.

### Drive/steering

- 4×4 drive, full hydraulic power steering, with four modes such as front wheel steering, rear wheel steering, four wheel steering and crab steering.

### Axle

- Front and rear axles are the steering drive shafts.

### Tyre

- 4\*—29.5R25 ★★ ★ .

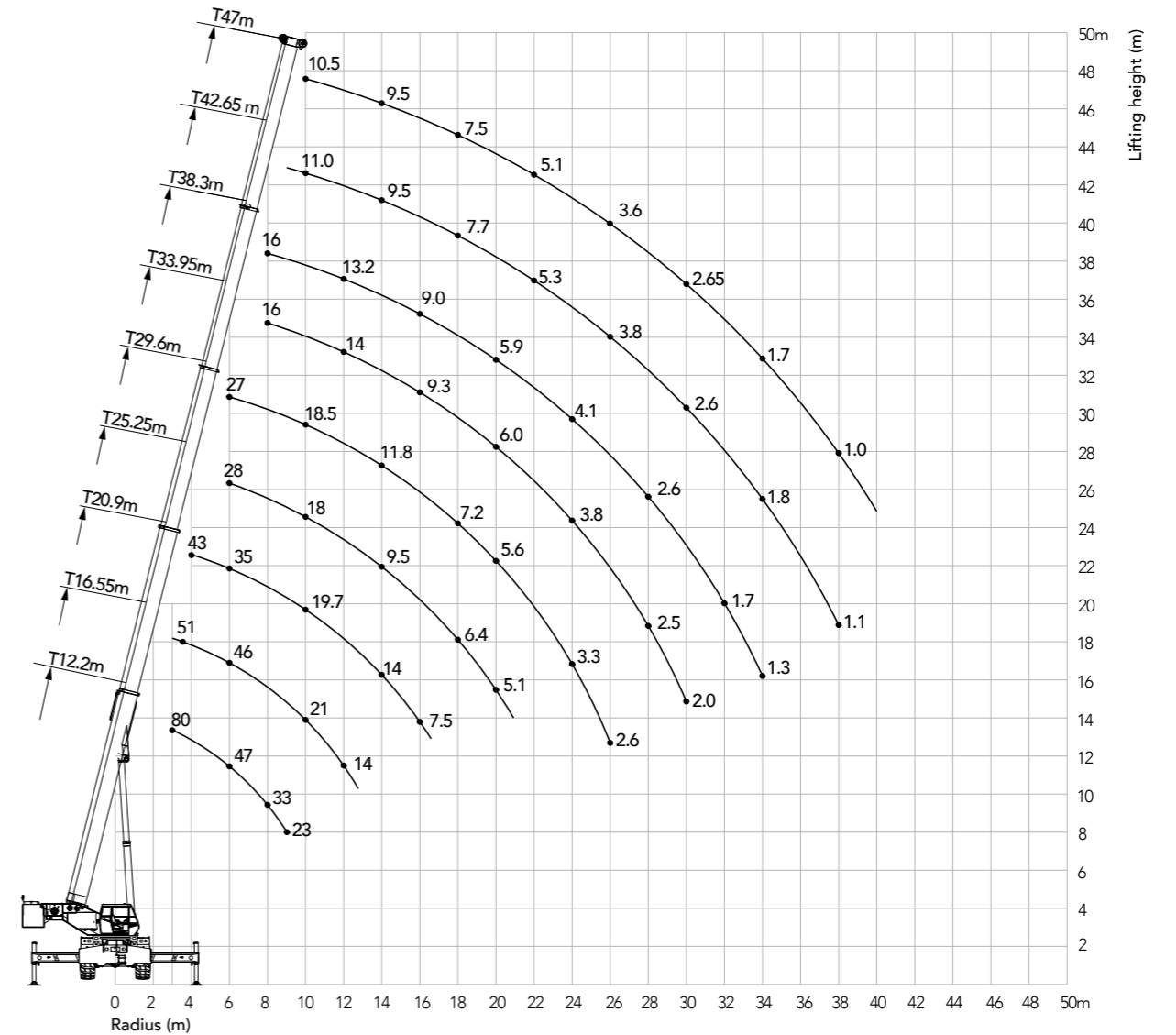
### Brake system

- Double-circuit braking system is adopted where one circuit still works properly when the other fails, and the safety and reliability of braking system are improved.
- Service brake is equipped with the double-circuit braking system where the independent circuit brake is provided for the front and rear axles, and all wheels are equipped with disc brakes.
- Parking brake is a disc brake on the front axle flange.

### Electric system

- 2\*12V maintenance-free battery is provided with the mechanical power switch, and the overall power may be manually cut off.

## Boom Operating Range



Unit: t

### Boom Load Chart

SRC800C Crane Performance Table  
(7.4m fully-extended outrigger and 9.5t counterweight) (free extension and retraction)

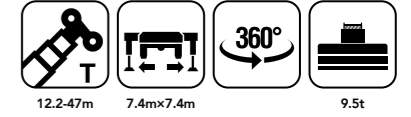


Operating amplitude	Lifting Capacity for Different Boom Lengths (t)									Operating amplitude
	12.20	16.55	20.90	25.25	29.60	33.95	38.30	42.70	47.00	
3.0	80.00	51.00	28.00							3.0
3.5	75.00	51.00	28.00							3.5
4.0	67.00	51.00	28.00	43.00	28.00	28.00				4.0
4.5	62.00	49.00	28.00	41.00	27.50	27.00				4.5
5.0	56.50	48.00	28.00	39.00	27.00	25.00	28.00	26.00	26.00	5.0
5.5	52.00	47.00	28.00	37.00	25.20	23.50	28.00	24.80	24.80	5.5
6.0	47.00	46.00	28.00	35.00	23.80	22.20	28.00	23.50	23.50	6.0
6.5	43.50	42.00	28.00	33.30	23.00	21.00	28.00	23.00	22.50	6.5
7.0	39.50	39.50	27.70	31.80	22.30	19.80	28.00	21.80	21.50	7.0
8.0	33.00	32.00	27.20	28.00	20.90	17.50	23.00	20.50	18.50	8.0
9.0	24.00	25.50	25.40	23.30	18.00	16.30	21.00	18.00	15.20	9.0
10.0		21.00	21.00	19.70	17.00	15.50	18.00	17.20	14.00	10.0
11.0		17.00	17.10	17.00	16.00	14.00	14.80	16.60	12.60	11.0
12.0		14.20	14.50	14.00	12.80	12.00	11.70	13.90	11.20	12.0
14.0				10.20	10.20	10.50	9.50	10.40	10.20	14.0
16.0				7.60	7.60	7.60	8.00	8.40	8.70	16.0
18.0				5.80	5.80	5.80	6.40	6.60	6.90	18.0
20.0							5.10	5.30	5.50	20.0
22.0										22.0
24.0										24.0
26.0										26.0
28.0										28.0
30.0										30.0
32.0										32.0
34.0										34.0
36.0										36.0
38.0										38.0
Part Line	12	10	8	8	8	6	6	6	6	Part Line
Mode	I,II	I	II	I	I,II	II	I,II	I,II	II	Mode
TELE1	0%	50%	0%	100%	50%	0%	100%	50%	0%	TELE1
TELE2	0%	0%	17%	0%	17%	33%	17%	33%	50%	TELE2
TELE3	0%	0%	17%	0%	17%	33%	17%	33%	50%	TELE3
TELE4	0%	0%	17%	0%	17%	33%	17%	33%	50%	TELE4
Min Boom Angle	/	/	/	/	/	/	/	/	/	Min Boom Angle
Capacity at 0° Boom Angle	13.25	8.00	8.20	4.00	4.40	5.20	2.50	2.70	3.30	Capacity at 0° Boom Angle

Unit: t

### Boom Load Chart

SRC800C Crane Performance Table  
(7.4m fully-extended outrigger and 9.5t counterweight) (free extension and retraction)



Operating amplitude	Lifting Capacity for Different Boom Lengths (t)											Operating amplitude
	29.60	33.95	38.30	42.70	47.00	51.35	55.70	60.05	64.40	68.75	73.10	
3.0												3.0
3.5												3.5
4.0												4.0
4.5												4.5
5.0												5.0
5.5	27.00	23.50	16.00									5.5
6.0	27.00	23.50	16.00									6.0
6.5	26.00	22.50	16.00	16.00	16.00	10.50						6.5
7.0	24.60	21.20	15.20	16.00	16.00	10.50	17.00	15.50	10.00			7.0
8.0	22.00	20.70	14.80	16.00	16.00	10.50	17.00	14.90	9.50			8.0
9.0	20.00	18.10	13.60	16.00	16.00	10.00	16.00	14.50	9.10	11.00	10.50	9.0
10.0	18.50	17.20	11.80	16.00	15.80	9.80	15.50	14.00	8.90	11.00	10.50	10.0
11.0	16.50	16.40	10.60	15.20	15.20	9.40	14.20	13.00	8.70	11.00	10.00	11.0
12.0	14.50	14.00	9.50	14.00	14.10	9.10	13.20	12.20	8.40	10.50	9.70	12.0
14.0	11.90	10.80	8.60	11.50	11.30	8.70	11.20	10.10	7.50	9.50	9.30	14.0
16.0	9.30	8.60	7.00	9.30	8.80	6.70	9.20	8.80	5.40	8.50	8.00	16.0
18.0	7.20	6.90	6.10	7.50	7.50	5.40	7.40	6.95	4.50	7.70	6.90	18.0
20.0	5.65	5.70	5.40	6.00	6.05	4.50	6.10	6.10	4.20	6.60	5.90	20.0
22.0	4.40	4.50	4.65	5.00	5.00	3.90	5.10	5.10	3.90	5.50	5.05	22.0
24.0	3.40	3.70	3.85	3.80	4.05	3.70	4.20	4.20	3.70	4.60	4.25	24.0
26.0	2.80	2.90	3.20	3.10	3.30	3.30	3.40	3.55	3.50	3.90	3.80	26.0
28.0				2.50	2.65	2.80	2.80	2.80	3.10	3.20	3.30	28.0
30.0				2.00	2.15	2.30	2.30	2.35	2.65	2.70	2.90	30.0
32.0								1.80	1.95	2.25	2.30	32.0
34.0								1.40	1.60	1.90	1.80	34.0
36.0									1.40	1.70	1.40	36.0
38.0									1.10	1.35	1.05	38.0
Part Line	6	5	5	5	4	4	4	4	4	3	3	Part Line
Mode	I,II	I,II	II	I,II	I,II	II	I,II	I,II	II	I,II	I,II	Mode
TELE1	100%	50%	0%	100%	50%	0%	100%	50%	0%	100%	47%	TELE1
TELE2	33%	50%	66%	50%	66%	84%	66%	84%	100%	84%	100%	TELE2
TELE3	33%	50%	66%	50%	66%	84%	66%	84%	100%	84%	100%	TELE3
TELE4	33%	50%	66%	50%	66%	84%	66%	84%	100%	84%	100%	TELE4
Min Boom Angle	/	/	/	/	/	/	/	/	/	(19.0)	(17.0)	Min Boom Angle
Capacity at 0° Boom Angle	1.50	1.80	2.10	0.90	1.30	1.70	0.40	0.55	0.75	/	/	Capacity at 0° Boom Angle

Unit: t

### Boom Load Chart

SRC800C Crane Performance Table  
(5.25m fully-extended outrigger and 9.5t counterweight) (free extension and retraction)

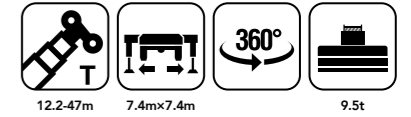


Operating amplitude	Lifting Capacity for Different Boom Lengths (t)									Operating amplitude
	12.20	16.55			20.90			25.25		
3.0	75.00	48.00	28.00							3.0
3.5	68.00	48.00	28.00							3.5
4.0	61.00	48.00	28.00	43.00	26.00	20.00				4.0
4.5	53.00	48.00	28.00	41.00	26.00	20.00				4.5
5.0	48.00	42.00	28.00	38.00	26.00	20.00	26.00	22.00	18.00	5.0
5.5	41.00	36.50	28.00	32.50	25.20	20.00	26.00	22.00	18.00	5.5
6.0	36.00	31.60	28.00	28.50	23.80	20.00	24.00	22.00	18.00	6.0
6.5	31.00	28.00	26.00	25.20	22.60	20.00	22.00	22.00	18.00	6.5
7.0	26.00	24.70	24.70	22.20	21.00	19.80	20.00	20.00	18.00	7.0
8.0	20.00	19.60	19.60	18.10	17.80	17.50	17.50	18.00	16.00	8.0
9.0	15.80	15.50	15.50	15.00	15.50	16.30	15.20	15.10	15.00	9.0
10.0		12.50	12.50	12.20	13.40	14.20	12.80	13.20	13.60	10.0
11.0		10.20	10.20	9.80	10.85	11.90	10.60	11.60	12.60	11.0
12.0		8.20	8.50	8.10	9.40	10.10	8.70	9.80	11.00	12.0
14.0				5.50	6.90	7.50	6.20	7.20	8.30	14.0
16.0				3.70	5.10	5.60	4.40	5.50	6.40	16.0
18.0				2.50	3.60	4.20	3.10	4.00	5.00	18.0
20.0							2.10	3.00	3.90	20.0
22.0										22.0
24.0										24.0
26.0										26.0
28.0										28.0
30.0										30.0
32.0										32.0
Part Line	12	8	6	8	8	6	6	6	4	Part Line
Mode	I,II	I	II	I	I,II	II	I,II	I,II	II	Mode
TELE1	0%	50%	0%	100%	50%	0%	100%	50%	0%	TELE1
TELE2	0%	0%	17%	0%	17%	33%	17%	33%	50%	TELE2
TELE3	0%	0%	17%	0%	17%	33%	17%	33%	50%	TELE3
TELE4	0%	0%	17%	0%	17%	33%	17%	33%	50%	TELE4
Min Boom Angle	/	/	/	/	/	/	/	/	/	Min Boom Angle
Capacity at 0° Boom Angle	12.90	5.80	7.00	2.25	2.70	4.40	1.30	1.80	2.40	Capacity at 0° Boom Angle

Unit: t

### Boom Load Chart

SRC800C Crane Performance Table  
(5.25m fully-extended outrigger and 9.5t counterweight) (free extension and retraction)



Operating amplitude	Lifting Capacity for Different Boom Lengths (t)											Operating amplitude	
	29.60		33.95			38.30		42.65		47.00			
3.0												3.0	
3.5												3.5	
4.0												4.0	
4.5												4.5	
5.0												5.0	
5.5	24.00	23.00	16.00									5.5	
6.0	24.00	23.00	16.00									6.0	
6.5	22.00	19.00	16.00	20.00	16.00	10.50	16.00	14.50				6.5	
7.0	23.00	19.50	16.00	19.00	16.00	10.50	16.00	13.50	11.00			7.0	
8.0	18.00	16.75	15.50	17.00	16.00	10.50	16.00	13.50	11.00			8.0	
9.0	15.00	15.00	15.00	15.00	16.00	10.00	14.20	12.60	11.00	11.00	10.50	9.0	
10.0	12.80	13.80	14.80	13.00	14.20	9.80	12.30	11.40	10.50	11.00	10.50	9.50	10.0
11.0	11.00	12.00	13.00	11.00	12.20	9.40	10.80	10.40	10.00	10.70	10.00	9.50	11.0
12.0	9.50	10.40	11.30	9.60	10.80	9.00	9.50	9.50	9.50	9.90	9.50	9.10	12.0
14.0	6.90	7.75	8.60	7.20	8.10	8.50	7.50	8.10	8.80	8.00	8.30	7.60	14.0
16.0	5.10	5.90	6.70	5.20	6.20	6.70	5.80	6.30	6.90	6.20	6.50	5.80	16.0
18.0	3.70	4.50	5.30	3.80	4.80	5.30	4.40	5.00	5.50	5.00	5.20	4.60	18.0
20.0	2.65	3.43	4.20	2.70	3.75	4.20	3.30	4.00	4.40	4.00	4.20	3.60	20.0
22.0	1.95	2.65	3.35	2.10	2.90	3.35	2.45	3.10	3.60	3.10	3.30	2.90	22.0
24.0	1.30	1.95	2.60	1.60	2.30	2.70	1.80	2.40	2.85	2.40	2.55	2.25	24.0
26.0		1.45	2.00	1.20	1.80	2.15	1.40	1.85	2.30	1.80	1.95	1.70	26.0
28.0							1.00	1.50	1.85	1.30	1.50	1.30	28.0
30.0								1.10	1.45	0.85	1.10		30.0
32.0									1.10				32.0
Part Line	5	5	5	4	4	4	4	4	3	3	3	3	Part Line
Mode	I,II	I,II	II	I,II	I,II	II	I,II	I,II	II	I,II	I,II	I,II	Mode
TELE1	100%	50%	0%	100%	50%	0%	100%	50%	0%	100%	50%	100%	TELE1
TELE2	33%	50%	66%	50%	66%	84%	66%	84%	100%	84%	100%	100%	TELE2
TELE3	33%	50%	66%	50%	66%	84%	66%	84%	100%	84%	100%	100%	TELE3
TELE4	33%	50%	66%	50%	66%	84%	66%	84%	100%	84%	100%	100%	TELE4
Min Boom Angle	/	/	/	(30.0)	(23.0)	(21.0)	(32.0)	(27.0)	(26.0)	(38.0)	(32.0)	(40.0)	Min Boom Angle
Capacity at 0° Boom Angle	0.40	0.90	1.60	/	/	/	/	/	/	/	/	/	Capacity at 0° Boom Angle

Unit: t

### Boom Load Chart

SRC800C Crane Performance Table  
(3.1m fully-extended outrigger and 9.5t counterweight) (free extension and retraction)

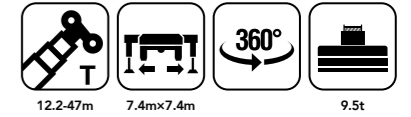


Operating amplitude	Lifting Capacity for Different Boom Lengths (t)									Operating amplitude
	12.20	16.55			20.90			25.25		
3.0	40.00	31.00	25.00							3.0
3.5	32.00	26.00	23.00	23.00						3.5
4.0	25.50	22.00	21.50	20.00	20.00	20.00				4.0
4.5	21.00	19.00	18.00	16.50	16.50	16.50				4.5
5.0	17.90	16.00	15.20	14.00	14.00	14.00	16.00	16.00	16.00	5.0
5.5	15.00	13.70	13.20	12.00	12.50	13.00	14.00	14.50	14.50	5.5
6.0	12.80	12.00	11.50	10.60	10.80	11.20	12.50	12.80	12.80	6.0
6.5	11.00	10.50	10.20	9.40	9.90	10.50	11.00	11.50	11.50	6.5
7.0	9.60	9.10	9.10	8.20	8.70	9.00	9.90	10.50	10.50	7.0
8.0	7.30	6.80	7.00	6.30	6.70	7.10	8.00	8.30	8.50	8.0
9.0	5.50	5.20	5.60	4.70	5.20	5.60	6.30	6.70	7.20	9.0
10.0		3.90	4.60	3.40	4.00	4.40	5.00	5.50	6.00	10.0
11.0		3.00	3.70	2.50	3.10	3.50	4.00	4.50	5.00	11.0
12.0		2.20	3.00	1.85	2.30	2.80	3.20	3.60	4.00	12.0
14.0							2.00	2.40	2.80	14.0
16.0							1.00	1.60	2.00	16.0
18.0										18.0
20.0										20.0
22.0										22.0
Part Line	8	6	6	6	4	4	4	4	4	Part Line
Mode	I,II	I	II	I	I,II	II	I,II	I,II	II	Mode
TELE1	0%	50%	0%	100%	50%	0%	100%	50%	0%	TELE1
TELE2	0%	0%	17%	0%	17%	33%	17%	33%	50%	TELE2
TELE3	0%	0%	17%	0%	17%	33%	17%	33%	50%	TELE3
TELE4	0%	0%	17%	0%	17%	33%	17%	33%	50%	TELE4
Min Boom Angle	/	/	/	(28.0)	(20.0)	/	(41.0)	(36.0)	(33.0)	Min Boom Angle
Capacity at 0° Boom Angle	5.9	1.5	2.3	/	/	1	/	/	/	Capacity at 0° Boom Angle

Unit: t

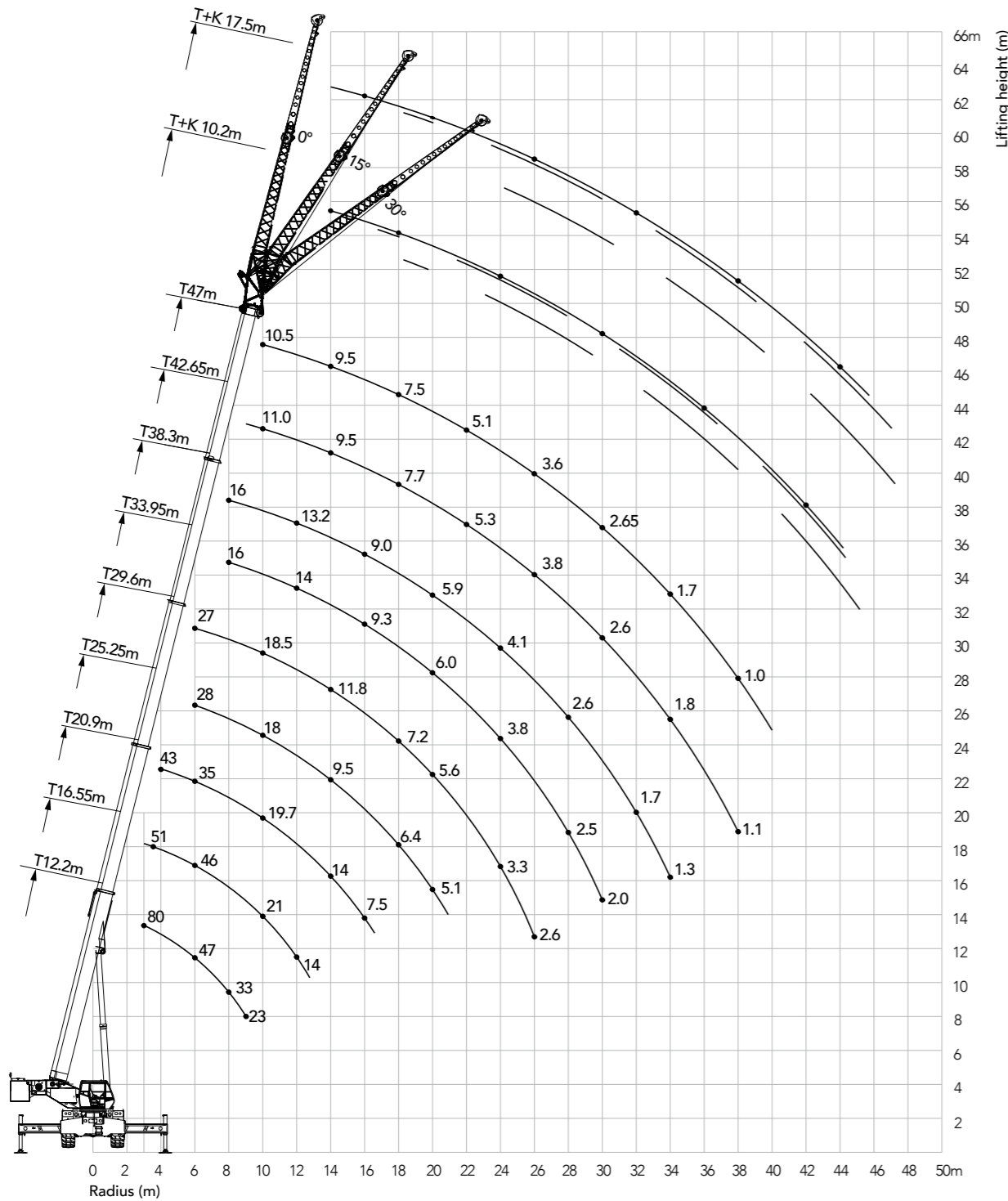
### Boom Load Chart

SRC800C Crane Performance Table  
(3.1m fully-extended outrigger and 9.5t counterweight) (free extension and retraction)



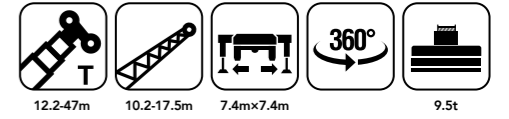
Operating amplitude	Lifting Capacity for Different Boom Lengths (t)											Operating amplitude	
	29.60	33.95			38.30			42.65	47.00				
3.0												3.0	
3.5												3.5	
4.0												4.0	
4.5												4.5	
5.0	14.00	14.00	14.00									5.0	
5.5	12.50	12.50	12.50									5.5	
6.0	11.00	11.50	12.00									6.0	
6.5	9.60	10.40	11.20	11.00	10.50	10.50						6.5	
7.0	8.60	9.40	10.20	10.00	9.90	10.50	9.00	9.00	9.00			7.0	
8.0	7.00	8.00	9.00	8.50	8.20	9.00	7.20	7.60	8.00			8.0	
9.0	5.70	7.00	7.40	6.90	7.20	7.50	5.80	6.35	6.90	6.60	6.50	6.00	9.0
10.0	4.60	5.80	6.20	5.40	6.00	6.30	4.80	5.40	6.00	5.60	5.60	5.00	10.0
11.0	3.80	4.80	5.20	4.50	5.00	5.30	4.00	4.65	5.30	4.70	4.80	4.00	11.0
12.0	3.10	4.00	4.40	3.60	4.20	4.50	3.30	3.95	4.60	3.80	4.20	3.10	12.0
14.0	1.80	2.80	3.20	2.40	3.00	3.40	2.10	2.90	3.50	2.60	2.80	2.00	14.0
16.0		1.90	2.30	1.50	2.10	2.40	1.20	2.10	2.50	1.80	2.00	1.20	16.0
18.0		1.20	1.60		1.50	1.70		1.50	1.80	1.10	1.40		18.0
20.0			1.00							1.00			20.0
22.0													22.0
Part Line	4	4	4	3	3	3	3	3	3	3	3	3	Part Line
Mode	I,II	I,II	II	I,II	I,II	II	I,II	I,II	II	I,II	I,II	I,II	Mode
TELE1	100%	50%	0%	100%	50%	0%	100%	50%	0%	100%	50%	100%	TELE1
TELE2	33%	50%	66%	50%	66%	84%	66%	84%	100%	84%	100%	100%	TELE2
TELE3	33%	50%	66%	50%	66%	84%	66%	84%	100%	84%	100%	100%	TELE3
TELE4	33%	50%	66%	50%	66%	84%	66%	84%	100%	84%	100%	100%	TELE4
Min Boom Angle	(46.0)	(42.0)	(40.0)	(49.0)	(46.0)	(42.0)	(53.0)	(50.0)	(48.0)	(55.0)	(54.0)	(58.0)	Min Boom Angle
Capacity at 0° Boom Angle	/	/	/	/	/	/	/	/	/	/	/	/	Capacity at 0° Boom Angle

### Jib Operating Range



### Jib Load Chart

Unit: t



SRC800C Jib Load Chart (Fully-extended outrigger for side and rear operations)

Operating elevation (°)	Fully-extended boom (m)+jib(m)						Operating elevation (°)
	47+10.2			47+17.5			
	0°	20°	40°	0°	20°	40°	
78	6500	5000	4500	3800	2500	2000	78
76	6500	4800	4300	3500	2500	2000	76
74	6500	4600	4200	3100	2400	2000	74
72	6000	4400	4100	2900	2300	2000	72
70	5600	4200	4000	2800	2200	1900	70
68	5300	3900	3800	2700	2100	1800	68
66	4800	3700	3500	2600	2000	1600	66
64	4200	3500	3200	2400	1900	1500	64
62	3600	3100	2800	2200	1800	1400	62
60	3100	2700	2500	2000	1700	1300	60
58	2500	2300	2200	1800	1600	1200	58
56	2000	1900	1800	1600	1500	1100	56
54	1700	1500	1350	1400	1300	1000	54
52	1450	1250	1100	1150			52
50	1200	1050	900				50
48	1000						48
Number of parts of line	1	1	1	1	1	1	Number of parts of line
Hook	8t hook	8t hook	8t hook	8t hook	8t hook	8t hook	Hook
Min. angle	37	38	40	43	45	47	Min. angle

Notes

---



## Sany Automobile Hoisting Machinery Co., Ltd.

No.168, Jinzhou Avenue, Jinzhou Development Zone, Changsha, Hunan, China  
Zip 410600

Tel 0731-8787 3131 Fax 0731-8403 1999-196

Service 400 887 8318 Consulting 400 887 9318

Email qzjyx@sany.com.cn

— Agent information —

### Reminder:

For safe and reliable operation of the diesel engines, please fill Grade IV machines with Grade IV diesel and urea solution conforming to related national standards. Please refer to the operating instructions and related standards for details.

Any change in the technical parameters and configuration due to advancement in technology may occur without prior notice. The machine in the figures may include auxiliary equipment. This brochure is for reference only, and goods in kind shall prevail.

Copyright at Sany Heavy Industry. No part of this catalogue may be copied, recorded or used for any purpose without written approval from Sany Heavy Industry.

© Printed in November 2017 in China

[www.sany.com.cn](http://www.sany.com.cn)



Instantly scanning for  
reading more